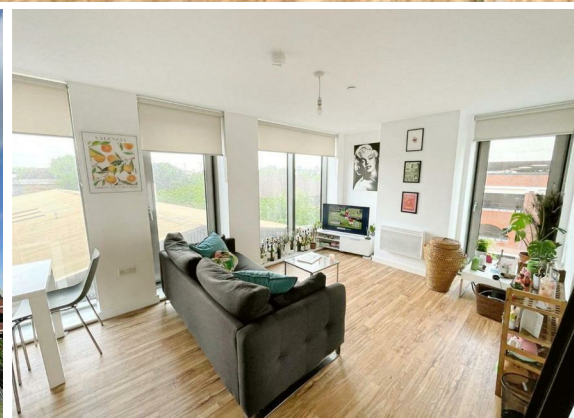
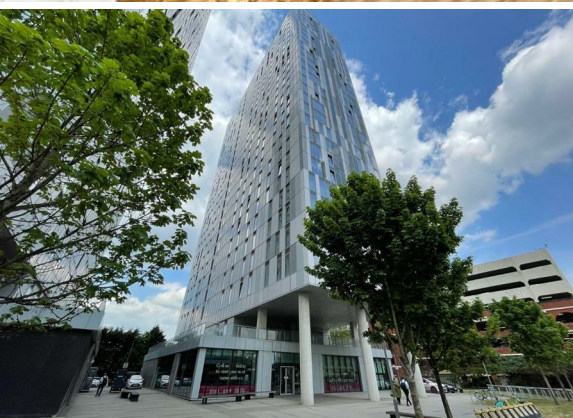




2 Bed  
Apartment  
located in 9  
Michigan Avenue

Price £175,000



 **NPP**  
RESIDENTIAL



**Floor Plan**

Total floor area 65.8 sq.m. (708 sq.ft.) approx

This plan is for illustration purposes only and may not be representative of the property. Plan not to scale. Powered by PropertyBox

**DIRECTIONS**

**CONTACT**

22 Lloyd Street  
Manchester  
M2 5WA

E: [info@nppresidential.co.uk](mailto:info@nppresidential.co.uk)  
T: 0161 639 0059  
<https://nppresidential.co.uk/>

**EPC Rating:**  
**Council Tax Band: C**

Energy Efficiency Rating		Current	Potential
Very energy efficient - lower running costs			
(92 plus)	A		
(81-91)	B		
(69-80)	C		
(55-68)	D		
(39-54)	E		
(21-38)	F		
(1-20)	G		
Not energy efficient - higher running costs			
England & Wales		EU Directive 2002/91/EC	

